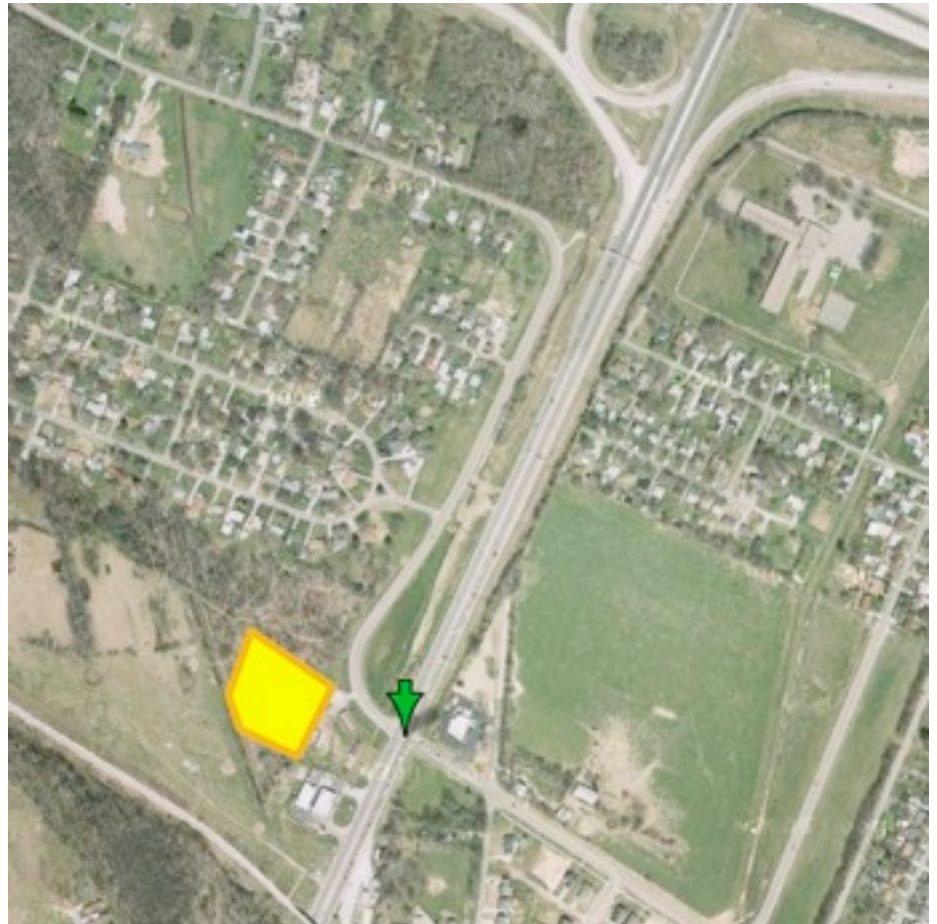




Dixie Land

11700 Dixie Highway

Louisville, KY



Located on Dixie Highway, south of I-265 (Gene Snyder Freeway), at Mooreman Road. This flat, 2.07 acre property is behind a new Thornton's. Zoned C-1 and all utilities are available.

Key Information:

- > 2.07 Acres Vacant Land
- > Zoned C-1
- > \$3.88/sq ft
- > All utilities available
- > Access from Mooreman Road



11700 Dixie Highway

For Sale: \$350,000

Call Jean Foster at (502) 964-7355